



**November 2016 Veteran Employment Update**  
**Veterans' Employment & Training Service**  
**U.S. Department of Labor**

Each month, the Veterans' Employment & Training Service (VETS) reviews data from the Bureau of Labor Statistics to provide this overview of veteran & nonveteran employment statistics.

**Table 1. Unemployment Rates by Cohort<sup>(1)</sup>**

Cohort	Unemployment Rate (%)		
	Nov-15	Nov-16	Change (+/-)
<b>Veterans &amp; Nonveterans</b> <i>(16+, seasonally adjusted)</i>	<b>5.0</b>	<b>4.6</b>	<b>-0.4</b>
<b>All Veterans, ages 18+</b>	<b>3.6</b>	<b>4.8</b>	<b>1.2</b>
<i>Male</i>	3.5	4.4	0.9
<i>Female</i>	4.5	7.4	2.9
<b>All Nonveterans, ages 18+</b>	<b>4.8</b>	<b>4.3</b>	<b>-0.5</b>
<b>Veterans, ages 18-24</b>	<b>7.0</b>	<b>11.7</b>	<b>4.7</b>
<i>Male</i>	8.2	10.8	2.6
<i>Female</i>	NDA	NDA	NDA
<b>Nonveterans, ages 18-24</b>	<b>10.0</b>	<b>8.6</b>	<b>-1.4</b>
<b>Veterans, ages 25-34</b>	<b>5.3</b>	<b>8.1</b>	<b>2.8</b>
<i>Male</i>	5.2	7.0	1.8
<i>Female</i>	5.9	13.3	7.4
<b>Nonveterans, ages 25-34</b>	<b>5.3</b>	<b>4.5</b>	<b>-0.8</b>
<b>Veterans, ages 35-44</b>	<b>2.9</b>	<b>3.9</b>	<b>1.0</b>
<i>Male</i>	2.5	3.9	1.4
<i>Female</i>	5.1	3.8	-1.3
<b>Nonveterans, ages 35-44</b>	<b>3.8</b>	<b>3.3</b>	<b>-0.5</b>
<b>Veterans, ages 45-54</b>	<b>2.9</b>	<b>3.9</b>	<b>1.0</b>
<i>Male</i>	2.6	3.2	0.6
<i>Female</i>	5.3	7.7	2.4
<b>Nonveterans, ages 45-54</b>	<b>3.2</b>	<b>3.3</b>	<b>0.1</b>
<b>Veterans, ages 55-64</b>	<b>3.9</b>	<b>4.7</b>	<b>0.8</b>
<i>Male</i>	4.2	4.7	0.5
<i>Female</i>	1.6	4.6	3.0
<b>Nonveterans, ages 55-64</b>	<b>3.6</b>	<b>3.2</b>	<b>-0.4</b>
<b>Post-9/11 Veterans, ages 18+</b>	<b>4.2</b>	<b>6.5</b>	<b>2.3</b>
<i>Male</i>	3.6	5.8	2.2
<i>Female</i>	7.2	10.0	2.8

**NDA:** No Data Available

**Table 2. All Employees by Industry Sector<sup>(2)</sup> from November 15 - November 16(p) (Veterans and Nonveterans)**

Industry	Change (+/-)
Professional and business services	588,000
Education and health services	576,000
Trade, transportation, and utilities	323,000
Leisure and hospitality	293,000
Government	231,000
Construction	159,000
Financial activities	154,000
Other services	75,000
Information	6,000
Manufacturing	-44,000
Mining and logging	-84,000

**Note:** Unless otherwise noted, data in tables are not seasonally adjusted. Some data points, specifically those related to female veterans, do not meet the Bureau of Labor Statistics' criteria for publishing. Instead, results should be viewed over a longer period of time to better understand trends in unemployment rates. VETS has provided the 24-month unemployment trends on page 2 of this document.

**Table 3. State Unemployment Rates<sup>(3)</sup>**  
**(Veterans and Nonveterans)**

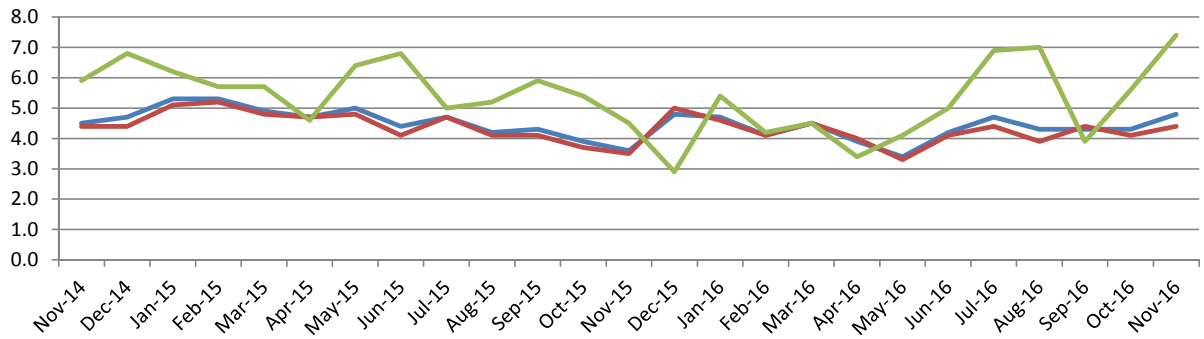
State	Oct 2015	Oct 2016	Change (+/-)
Alabama	5.8	6.0	0.2
Alaska	6.2	6.3	0.1
Arizona	6.0	5.2	-0.8
Arkansas	4.3	3.4	-0.9
California	5.8	5.3	-0.5
Colorado	3.2	3.1	-0.1
Connecticut	5.0	4.5	-0.5
Delaware	4.7	4.2	-0.5
District of Columbia	6.7	6.2	-0.5
Florida	5.1	4.9	-0.2
Georgia	5.6	5.2	-0.4
Hawaii	3.4	3.1	-0.3
Idaho	3.5	3.3	-0.2
Illinois	5.6	5.5	-0.1
Indiana	4.3	3.9	-0.4
Iowa	3.1	3.4	0.3
Kansas	3.7	4.0	0.3
Kentucky	4.8	4.6	-0.2
Louisiana	5.9	5.9	0.0
Maine	3.5	3.4	-0.1
Maryland	5.0	4.2	-0.8
Massachusetts	4.5	2.7	-1.8
Michigan	4.7	4.6	-0.1
Minnesota	3.0	3.2	0.2
Mississippi	6.2	5.7	-0.5
Missouri	4.0	4.1	0.1
Montana	3.7	3.8	0.1
Nebraska	2.7	3.1	0.4
Nevada	6.3	5.3	-1.0
New Hampshire	2.9	2.3	-0.6
New Jersey	4.8	4.9	0.1
New Mexico	6.3	6.5	0.2
New York	4.7	5.0	0.3
North Carolina	5.4	4.9	-0.5
North Dakota	1.9	2.2	0.3
Ohio	4.3	4.6	0.3
Oklahoma	4.2	4.9	0.7
Oregon	5.3	4.8	-0.5
Pennsylvania	4.4	5.4	1.0
Rhode Island	5.1	4.8	-0.3
South Carolina	5.6	4.6	-1.0
South Dakota	2.5	2.4	-0.1
Tennessee	5.3	4.9	-0.4
Texas	4.4	4.4	0.0
Utah	3.2	3.1	-0.1
Vermont	3.0	2.7	-0.3
Virginia	4.0	4.1	0.1
Washington	5.3	5.0	-0.3
West Virginia	5.6	5.6	0.0
Wisconsin	3.9	3.5	-0.4
Wyoming	3.9	4.6	0.7

**Sources:**

- (1) Current Population Survey (CPS)
- (2) Current Employment Statistics (CES) program
- (3) Local Area Unemployment Statistics (LAUS) program
- (p) Preliminary

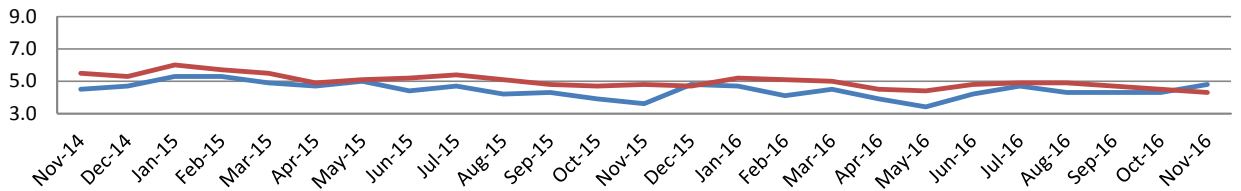
# 24-Month Unemployment Trends by Veteran Status, Gender, and Post-9/11 Era of Service

## Unemployment Rate for Veterans by Gender



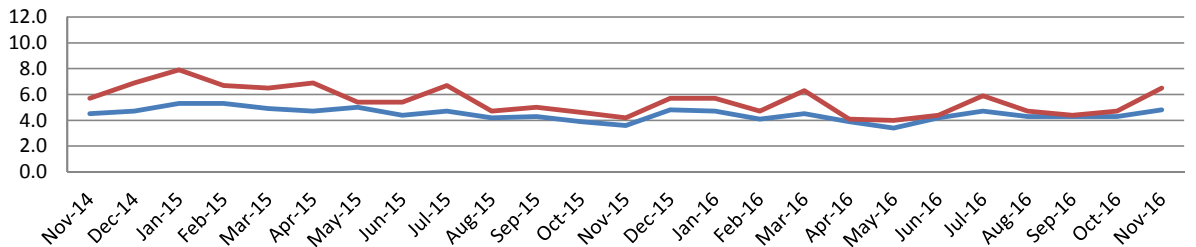
	Nov-14	Dec-14	Jan-15	Feb-15	Mar-15	Apr-15	May-15	Jun-15	Jul-15	Aug-15	Sep-15	Oct-15	Nov-15	Dec-15	Jan-16	Feb-16	Mar-16	Apr-16	May-16	Jun-16	Jul-16	Aug-16	Sep-16	Oct-16	Nov-16
Veterans	4.5	4.7	5.3	5.3	4.9	4.7	5.0	4.4	4.7	4.2	4.3	3.9	3.6	4.8	4.7	4.1	4.5	3.9	3.4	4.2	4.7	4.3	4.3	4.3	4.8
Male Veterans	4.4	4.4	5.1	5.2	4.8	4.7	4.8	4.1	4.7	4.1	4.1	3.7	3.5	5.0	4.6	4.1	4.5	4.0	3.3	4.1	4.4	3.9	4.4	4.1	4.4
Female Veterans	5.9	6.8	6.2	5.7	5.7	4.6	6.4	6.8	5.0	5.2	5.9	5.4	4.5	2.9	5.4	4.2	4.5	3.4	4.1	5.0	6.9	7.0	3.9	5.6	7.4

## Unemployment Rate, Veterans and Nonveterans



	Nov-14	Dec-14	Jan-15	Feb-15	Mar-15	Apr-15	May-15	Jun-15	Jul-15	Aug-15	Sep-15	Oct-15	Nov-15	Dec-15	Jan-16	Feb-16	Mar-16	Apr-16	May-16	Jun-16	Jul-16	Aug-16	Sep-16	Oct-16	Nov-16
Veterans	4.5	4.7	5.3	5.3	4.9	4.7	5.0	4.4	4.7	4.2	4.3	3.9	3.6	4.8	4.7	4.1	4.5	3.9	3.4	4.2	4.7	4.3	4.3	4.3	4.8
Nonveterans	5.5	5.3	6.0	5.7	5.5	4.9	5.1	5.2	5.4	5.1	4.8	4.7	4.8	4.7	5.2	5.1	5.0	4.5	4.4	4.8	4.9	4.9	4.7	4.5	4.3

## Unemployment Rate, All Veterans and Post-9/11 Era Veterans



	Nov-14	Dec-14	Jan-15	Feb-15	Mar-15	Apr-15	May-15	Jun-15	Jul-15	Aug-15	Sep-15	Oct-15	Nov-15	Dec-15	Jan-16	Feb-16	Mar-16	Apr-16	May-16	Jun-16	Jul-16	Aug-16	Sep-16	Oct-16	Nov-16
Veterans	4.5	4.7	5.3	5.3	4.9	4.7	5.0	4.4	4.7	4.2	4.3	3.9	3.6	4.8	4.7	4.1	4.5	3.9	3.4	4.2	4.7	4.3	4.3	4.3	4.8
Post-9/11 Veterans	5.7	6.9	7.9	6.7	6.5	6.9	5.4	5.4	6.7	4.7	5.0	4.6	4.2	5.7	5.7	4.7	6.3	4.1	4.0	4.4	5.9	4.7	4.4	4.7	6.5