



January 2017 Veteran Employment Update
Veterans' Employment & Training Service
U.S. Department of Labor

Each month, the Veterans' Employment & Training Service (VETS) reviews data from the Bureau of Labor Statistics to provide this overview of veteran & nonveteran employment statistics.

Table 1. Unemployment Rates by Cohort⁽¹⁾

Cohort	Unemployment Rate (%)		
	Jan-16	Jan-17	Change (+/-)
Veterans & Nonveterans (16+, seasonally adjusted)	4.9	4.8	-0.1
All Veterans, ages 18+	4.7	4.5	-0.2
Male	4.6	4.6	0.0
Female	5.4	3.8	-1.6
All Nonveterans, ages 18+	5.2	5.0	-0.2
Veterans, ages 18-24	12.9	11.6	-1.3
Male	9.4	12.4	3.0
Female	NDA	NDA	NDA
Nonveterans, ages 18-24	10.1	10.2	0.1
Veterans, ages 25-34	6.7	8.4	1.7
Male	7.1	8.3	1.2
Female	4.8	9.0	4.2
Nonveterans, ages 25-34	5.5	5.2	-0.3
Veterans, ages 35-44	3.9	4.5	0.6
Male	3.7	5.2	1.5
Female	5.1	0.3	-4.8
Nonveterans, ages 35-44	4.4	4.4	0.0
Veterans, ages 45-54	4.0	2.9	-1.1
Male	4.0	2.8	-1.2
Female	4.1	3.5	-0.6
Nonveterans, ages 45-54	3.9	3.7	-0.2
Veterans, ages 55-64	4.6	3.8	-0.8
Male	4.6	4.1	-0.5
Female	4.2	1.2	-3.0
Nonveterans, ages 55-64	3.9	3.8	-0.1
Post-9/11 Veterans, ages 18+	5.7	6.3	0.6
Male	5.3	6.4	1.1
Female	7.9	5.8	-2.1

NDA: No Data Available

Table 2. All Employees by Industry Sector⁽²⁾ from January 16 - January 17(p)
(Veterans and Nonveterans)

Industry	Change (+/-)
Professional and business services	530,000
Education and health services	516,000
Trade, transportation, and utilities	339,000
Leisure and hospitality	297,000
Financial activities	187,000
Construction	165,000
Government	116,000
Other services	67,000
Information	6,000
Manufacturing	-35,000
Mining and logging	-56,000

Note: Unless otherwise noted, data in tables are not seasonally adjusted. Some data points, specifically those related to female veterans, do not meet the Bureau of Labor Statistics' criteria for publishing. Instead, results should be viewed over a longer period of time to better understand trends in unemployment rates. VETS has provided the 24-month unemployment trends on page 2 of this document.

Table 3. State Unemployment Rates⁽³⁾
(Veterans and Nonveterans)

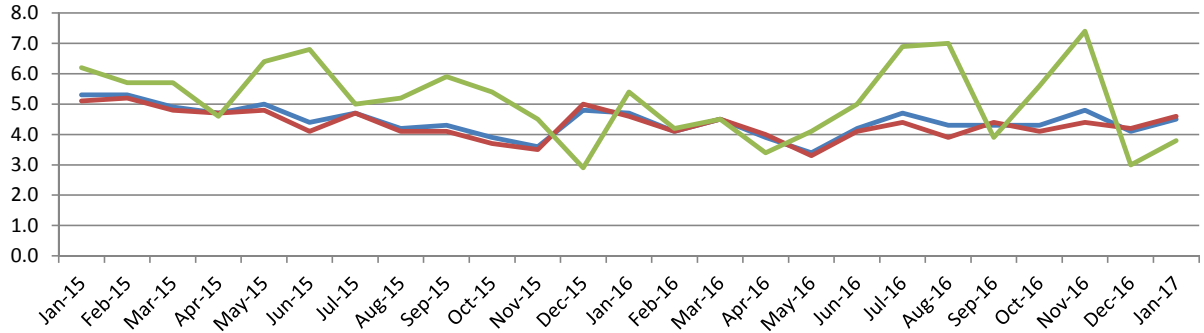
State	Dec 2015	Dec 2016	Change (+/-)
Alabama	5.9	5.9	0.0
Alaska	6.7	6.5	-0.2
Arizona	5.5	4.7	-0.8
Arkansas	4.6	3.8	-0.8
California	5.7	5.0	-0.7
Colorado	3.3	2.7	-0.6
Connecticut	4.9	3.9	-1.0
Delaware	4.3	3.9	-0.4
District of Columbia	6.3	5.4	-0.9
Florida	4.8	4.7	-0.1
Georgia	5.1	5.2	0.1
Hawaii	2.9	2.6	-0.3
Idaho	3.9	3.6	-0.3
Illinois	6.0	5.6	-0.4
Indiana	4.5	4.0	-0.5
Iowa	3.6	3.6	0.0
Kansas	3.6	3.8	0.2
Kentucky	5.5	4.5	-1.0
Louisiana	5.0	5.4	0.4
Maine	3.9	3.5	-0.4
Maryland	4.7	3.8	-0.9
Massachusetts	4.6	2.8	-1.8
Michigan	4.5	4.4	-0.1
Minnesota	3.7	4.0	0.3
Mississippi	7.1	5.7	-1.4
Missouri	3.9	4.0	0.1
Montana	4.3	4.2	-0.1
Nebraska	2.9	3.1	0.2
Nevada	6.1	4.9	-1.2
New Hampshire	2.9	2.5	-0.4
New Jersey	4.3	4.1	-0.2
New Mexico	6.2	6.3	0.1
New York	4.7	4.5	-0.2
North Carolina	5.3	4.9	-0.4
North Dakota	2.8	3.0	0.2
Ohio	4.6	4.7	0.1
Oklahoma	4.0	4.6	0.6
Oregon	5.2	4.1	-1.1
Pennsylvania	4.1	4.9	0.8
Rhode Island	5.1	4.5	-0.6
South Carolina	5.4	4.1	-1.3
South Dakota	3.0	3.0	0.0
Tennessee	5.3	4.9	-0.4
Texas	4.2	4.6	0.4
Utah	3.1	2.9	-0.2
Vermont	3.1	2.8	-0.3
Virginia	3.9	3.8	-0.1
Washington	5.9	5.3	-0.6
West Virginia	5.9	5.1	-0.8
Wisconsin	4.2	3.7	-0.5
Wyoming	4.6	4.9	0.3

Sources:

- (1) Current Population Survey (CPS)
- (2) Current Employment Statistics (CES) program
- (3) Local Area Unemployment Statistics (LAUS) program
- (p) Preliminary

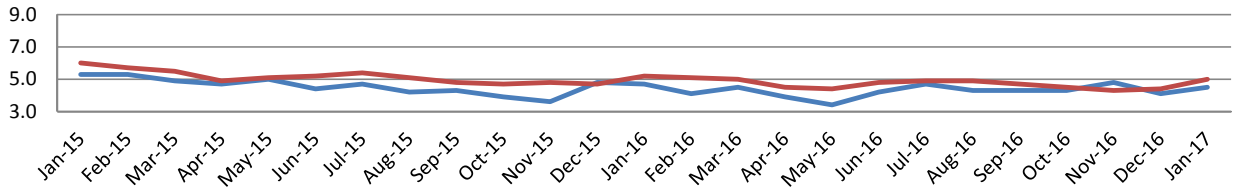
24-Month Unemployment Trends by Veteran Status, Gender, and Post-9/11 Era of Service (Non-seasonally adjusted)

Unemployment Rate for Veterans by Gender



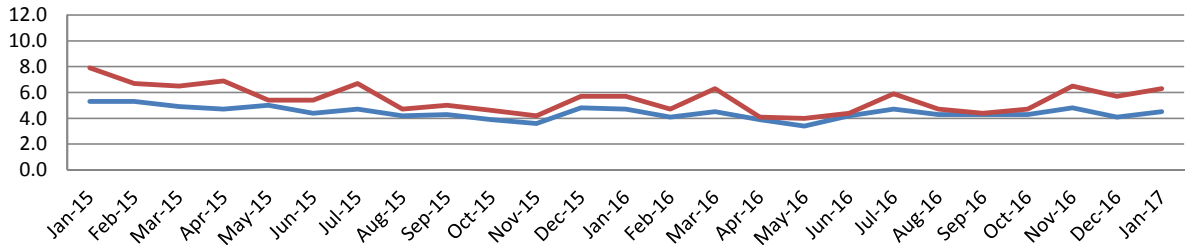
	Jan-15	Feb-15	Mar-15	Apr-15	May-15	Jun-15	Jul-15	Aug-15	Sep-15	Oct-15	Nov-15	Dec-15	Jan-16	Feb-16	Mar-16	Apr-16	May-16	Jun-16	Jul-16	Aug-16	Sep-16	Oct-16	Nov-16	Dec-16	Jan-17
Veterans	5.3	5.3	4.9	4.7	5.0	4.4	4.7	4.2	4.3	3.9	3.6	4.8	4.7	4.1	4.5	3.9	3.4	4.2	4.7	4.3	4.3	4.3	4.8	4.1	4.5
Male Veterans	5.1	5.2	4.8	4.7	4.8	4.1	4.7	4.1	4.1	3.7	3.5	5.0	4.6	4.1	4.5	4.0	3.3	4.1	4.4	3.9	4.4	4.1	4.4	4.2	4.6
Female Veterans	6.2	5.7	5.7	4.6	6.4	6.8	5.0	5.2	5.9	5.4	4.5	2.9	5.4	4.2	4.5	3.4	4.1	5.0	6.9	7.0	3.9	5.6	7.4	3.0	3.8

Unemployment Rate, Veterans and Nonveterans



	Jan-15	Feb-15	Mar-15	Apr-15	May-15	Jun-15	Jul-15	Aug-15	Sep-15	Oct-15	Nov-15	Dec-15	Jan-16	Feb-16	Mar-16	Apr-16	May-16	Jun-16	Jul-16	Aug-16	Sep-16	Oct-16	Nov-16	Dec-16	Jan-17
Veterans	5.3	5.3	4.9	4.7	5.0	4.4	4.7	4.2	4.3	3.9	3.6	4.8	4.7	4.1	4.5	3.9	3.4	4.2	4.7	4.3	4.3	4.3	4.8	4.1	4.5
Nonveterans	6.0	5.7	5.5	4.9	5.1	5.2	5.4	5.1	4.8	4.7	4.8	4.7	5.2	5.1	5.0	4.5	4.4	4.8	4.9	4.9	4.7	4.5	4.3	4.4	5.0

Unemployment Rate, All Veterans and Post-9/11 Era Veterans



	Jan-15	Feb-15	Mar-15	Apr-15	May-15	Jun-15	Jul-15	Aug-15	Sep-15	Oct-15	Nov-15	Dec-15	Jan-16	Feb-16	Mar-16	Apr-16	May-16	Jun-16	Jul-16	Aug-16	Sep-16	Oct-16	Nov-16	Dec-16	Jan-17
Veterans	5.3	5.3	4.9	4.7	5.0	4.4	4.7	4.2	4.3	3.9	3.6	4.8	4.7	4.1	4.5	3.9	3.4	4.2	4.7	4.3	4.3	4.3	4.8	4.1	4.5
Post-9/11 Veterans	7.9	6.7	6.5	6.9	5.4	5.4	6.7	4.7	5.0	4.6	4.2	5.7	5.7	4.7	6.3	4.1	4.0	4.4	5.9	4.7	4.4	4.7	6.5	5.7	6.3